

MPO/MTP Patch Cord

Description:

MPO is the integrated optic fiber patch cord, idely used in Data Center, and integrated routing field. V.TORCH is professionally engaged in passive optical components product. We are committed to provide the excellent products to customers



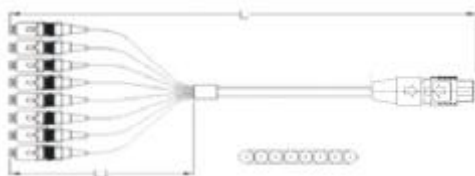
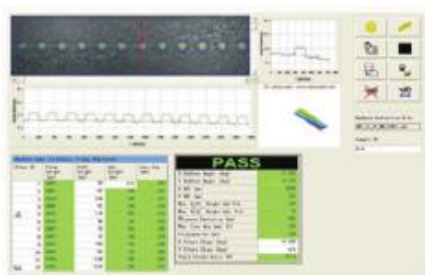
Features:

1. Match IEC61754, IEC61755 & GR-1435-CORE
2. 100% performance testing & excellent Geometry parameter Of face and core loss
3. Low insertion loss and high return loss
4. ROHS compliant
5. Complete range



Application:

1. High density cable wiring system
2. High efficiency cable wiring system
3. Connection of trunk lines
4. High integrated equipment



Parameter:

Optical Properties

Name	Units	Values			
Connector	/	LC or Others		MPO	
Mode	/	SM	MM	SM	MM
Insertion Loss	dB	Min:0.2, Max:0.3	0.2	Min:0.5, Max:0.75	Min:0.3, Max:0.75
Return loss	dB	50	35	60	35
Fiber Type	/	SM:OS1,OS2 MM:OM1,OM2,OM3,OM4			
Male/Female	/	/	Male:With Pins,Female:Without Pins		
Operating Temperature	℃	-25～+70			
Storage Temperature	℃	-40～+85			

Surface Geometrical parameters

Name	Units	Values for MPO	
		SM	MM
X-axis Radius	mm	Min:2000	
Y-axis Radius	mm	Min:5	
Fiber height	nm	1000~3500	
Fiber Height Difference	nm	Max:500	
Fiber Height Difference of Adjacent	nm	Max:300	
X-axis Angle	°	±0.2	
Y-axis Angle	/	PC:-0.2~0.2	APC:7.8~8.2±0.2
Fiber Sunken	nm	NA	-100~200